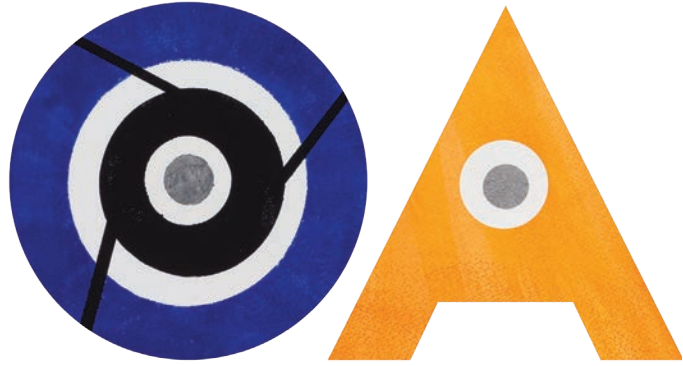


EXHIBIT GUIDE



# OPPOSITES ABSTRACT

a mo willems exhibit



children's  
museum  
pittsburgh

# OPPOSITES ABSTRACT

a **mo willems** exhibit

is based on Mo Willems' latest all-ages book, *Opposites Abstract* from Hyperion Books for Children. The exhibition focuses on the topic of opposites, taking inspiration from the eye-popping, emotive and highly-accessible words and images of the book. Visitors will explore the complicated yet simple concept of opposites through hands-on experiences, art-making activities, and artist-led performances. Geared to children and former children of all ages, the exhibition will inspire visitors to create and respond to art in different ways.

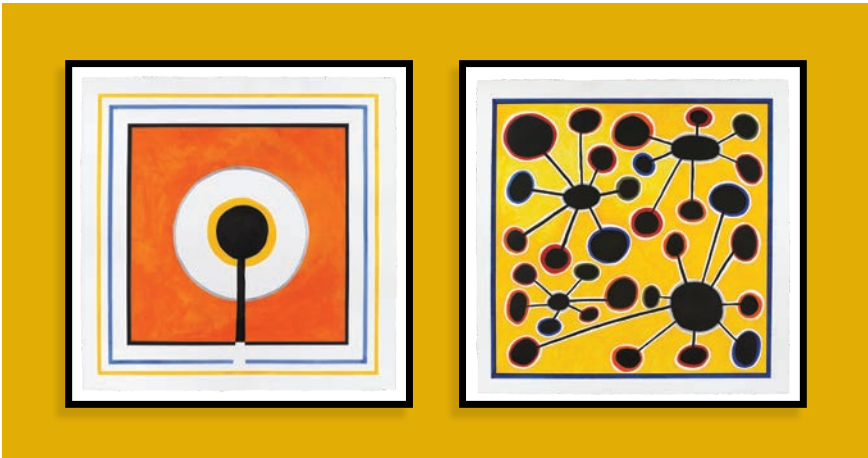
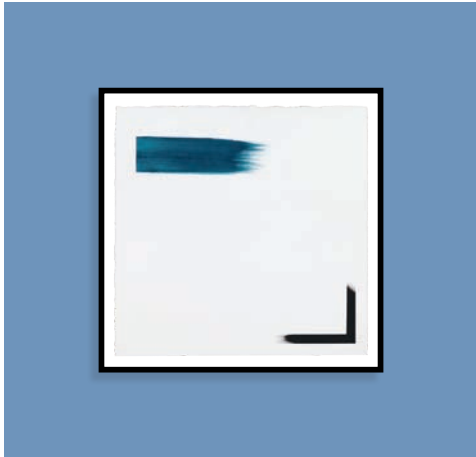


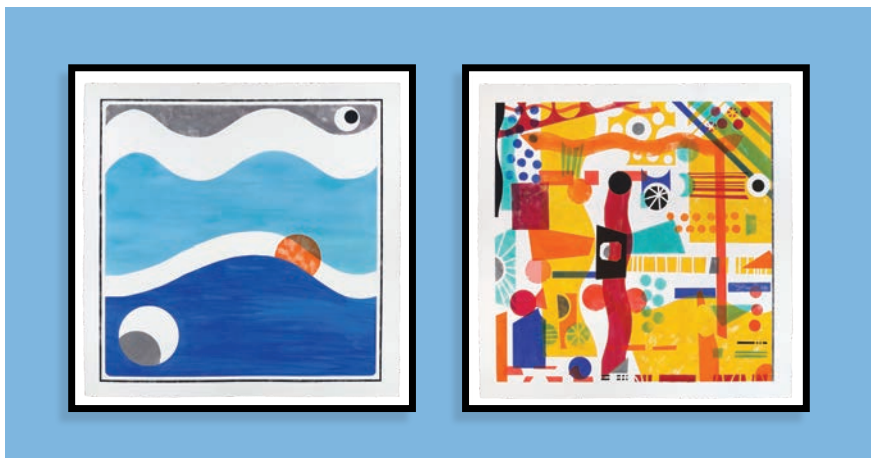
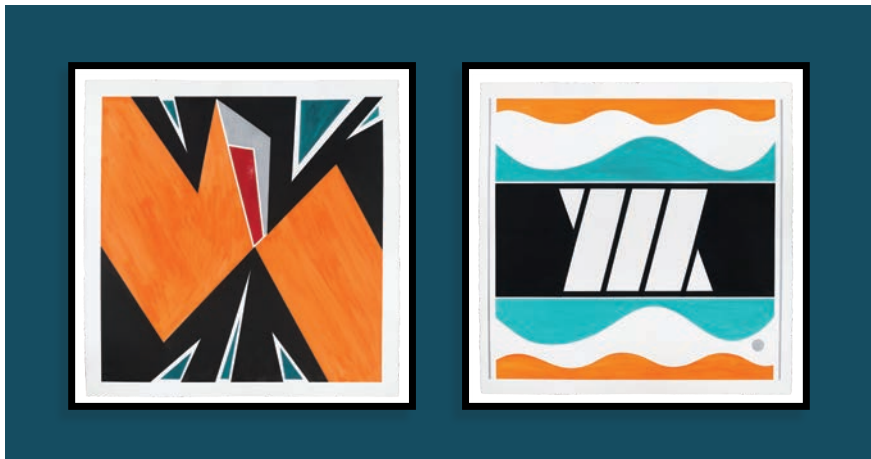
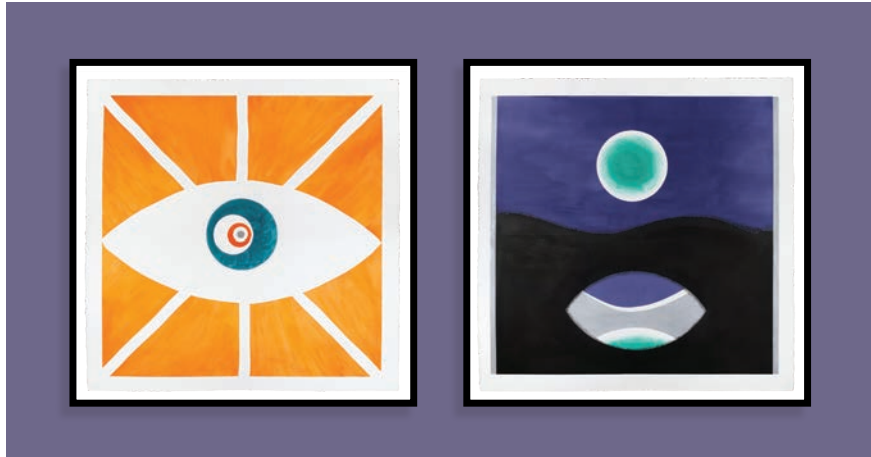
# EXHIBIT COMPONENTS



**In 2020**, artist Mo Willems created 20 colorful, large scale paintings using ink and acrylic on paper. They explore the notion of opposites through abstraction, provoking questions about how we see and experience the world. These images relate to real ideas, but don't necessarily look like things we recognize around us.

# ARTWORKS





- 0. This is Starting.
- 1. Is this Dark?
- 2. Is this Light?
- 3. Is this Soft?
- 4. Is this Hard?
- 5. Is this Mechanical?
- 6. Is this Organic?
- 7. Is this an Individual
- 8. Are these Groups?
- 9. Is this Inclusion?
- 10. Is this Exclusion?
- 11. Is this Intentional?
- 12. Is this Accidental?
- 13. Is this Broken?
- 14. Is this Fixed?
- 15. Is this Calm?
- 16. Is this Excited?
- 17. Is this Awake?
- 18. Is this Asleep?
- 19. This is Finished.

# SHAPE PROJECTOR

Create your own abstract artwork using light and color through shadow play. Manipulate the colorful and translucent shapes to create your composition. Choose an OPPOSITE that best describes your artwork. Once complete, can you find the OPPOSITE title and make a new artwork that is OPPOSITE?



# SHAPE STACKER

Intentionally stack colored shapes in a vertical frame to build a composition. Once complete, pull the knob to dump the blocks onto the table top. Try again and see another composition. How does this accidental composition compare to your intentional arrangement?



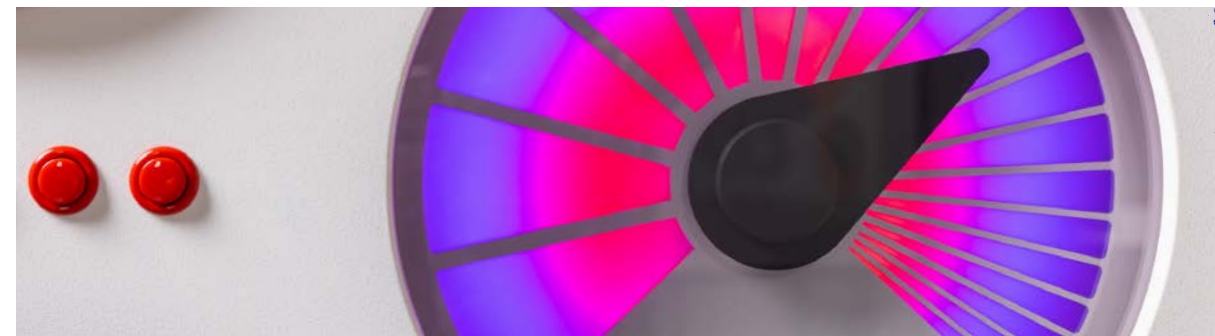
# DRAWING MACHINE

Draw lines and shapes on one side of the screen and watch the OPPOSITE appear on the other side. Is there anything that surprises you with how the OPPOSITE looks on the screen?



# SOUND SLOWER

Use the buttons to play a melody, then turn the crank to change the music. By turning the crank, you are manipulating the speed. When it is turned very quickly, the song begins to sound slower, more mechanical, more disjointed. Does the change in speed change how you feel about the music playing?



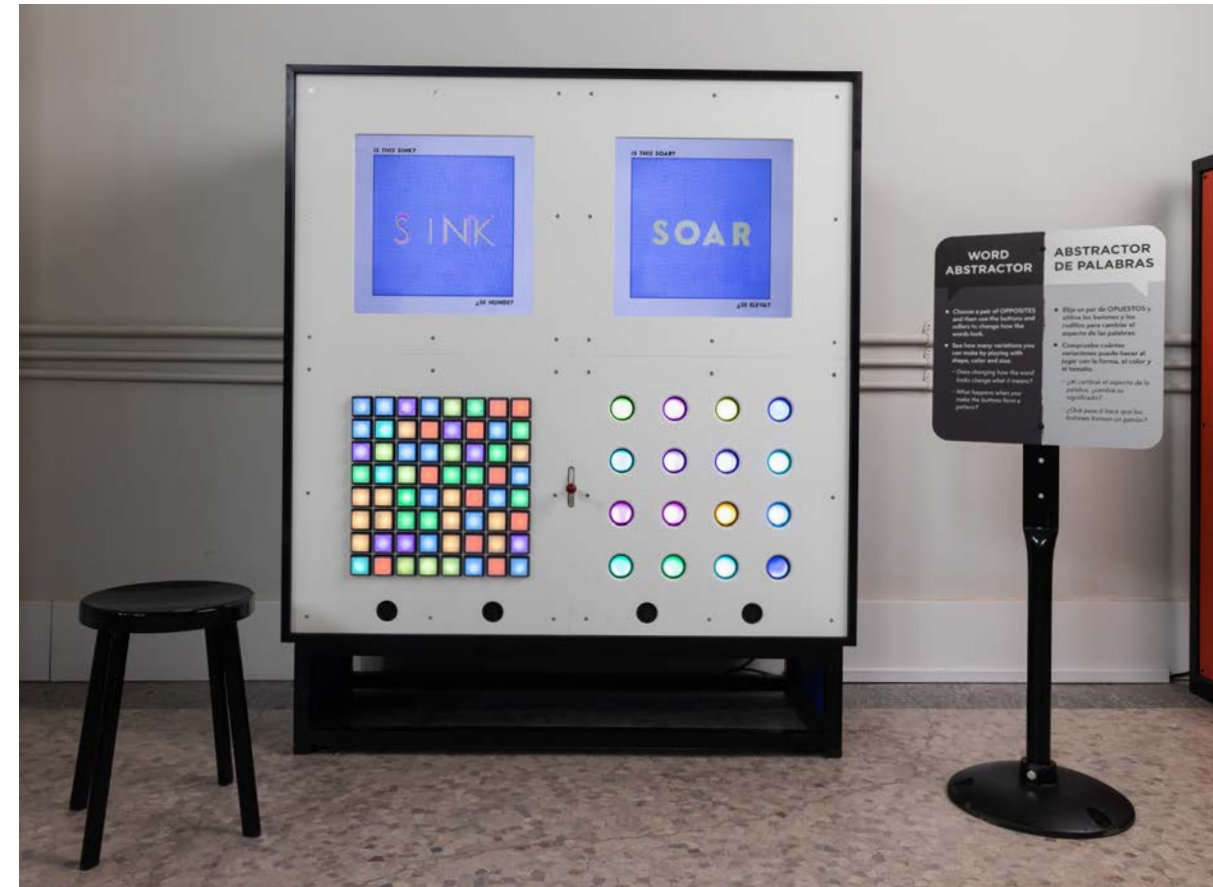
# BALL LAUNCHER

Pull the lever to send a ball through the groups of pegs. See if you can make the ball disappear into one of the groups. Is the ball part of a larger group or simply an individual moving through the space?



# WORD ABTRACTOR

Choose a pair of OPPOSITES and then use the buttons and rollers to change how the words look. See how many variations you can make by playing with the shape, color and size. Does changing how the word looks change what it means? How many different combinations can you make? What happens when you make the buttons form a pattern?





# COLOR REVERSER

Can colors have OPPOSITES? Use the colored pencils to draw a picture. Fill the page with as much color as you can. When your work is complete, hold it up to the Color Reverser and press the button. Or try one of the masks or cards provided! Notice how the colors change.



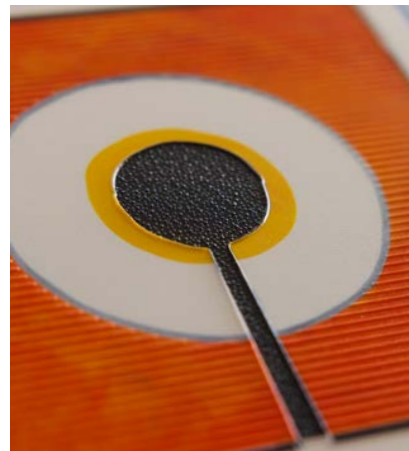
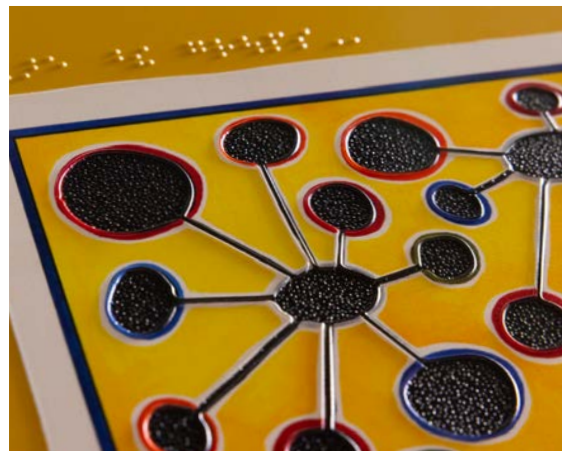
# ART BLENDER

Find one Element of Art and one OPPOSITE on the chart. Can you create an artwork that combines both? When you are finished hang your work on the section of the board that represents the two ideas.



# TACTILE BOOK

Go ahead, touch the art! This tactile book features raised lines and textures that make artwork more accessible for people who are blind or have low vision, or anyone who likes to learn through touch.



## SPECIFICATIONS

**SIZE:** 1,500 – 2,000 square feet interactives, 200 linear feet for artwork

**COST:** \$45,000 plus inbound shipping

**AVAILABILITY:** Contact for availability

**CONTACT:** [exhibits@pittsburghkids.org](mailto:exhibits@pittsburghkids.org) 412-322-5058 ext 229



children's  
museum

pittsburgh

Art © Mo Willems